

Introduction to the Second Position

TeachingYouMusic.com

Standard tuning

Standard tuning exercises in 4/4 time, measures 1 through 15. The exercises are organized by string groups:

- Measures 1-3: Treble clef, 4/4 time. Notes: G4 (1), A4 (2), B4 (3), C5 (4).
- Measures 4-5: Treble clef, 4/4 time. Notes: D5 (4), E5 (5).
- Measures 6-8: Treble clef, 4/4 time. Notes: F5 (6), G5 (7), A5 (8).
- Measures 9-11: Treble clef, 4/4 time. Notes: B5 (9), C6 (10), D6 (11).
- Measures 12-14: Treble clef, 4/4 time. Notes: E6 (12), F6 (13), G6 (14).
- Measure 15: Treble clef, 4/4 time. Notes: A6 (15).

Note Reading from 6th to 1st string

Note reading exercises in 4/4 time, measures 16 through 27. The exercises are organized by string groups:

- Measures 16-18: Treble clef, 4/4 time. Notes: G4 (16), A4 (17), B4 (18).
- Measures 19-21: Treble clef, 4/4 time. Notes: C5 (19), D5 (20), E5 (21).
- Measures 22-24: Treble clef, 4/4 time. Notes: F5 (22), G5 (23), A5 (24).
- Measures 25-27: Treble clef, 4/4 time. Notes: B5 (25), C6 (26), D6 (27).

Reading the 1st three strings

Reading the 1st three strings exercises in 4/4 time, measures 28 through 33. The exercises are organized by string groups:

- Measures 28-30: Treble clef, 4/4 time. Notes: G4 (28), A4 (29), B4 (30).
- Measures 31-33: Treble clef, 4/4 time. Notes: C5 (31), D5 (32), E5 (33).

Reading strings 4, 3, and 2

Reading strings 4, 3, and 2 exercises in 4/4 time, measures 34 through 36. The exercises are organized by string groups:

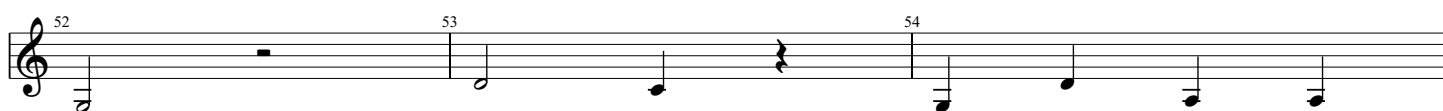
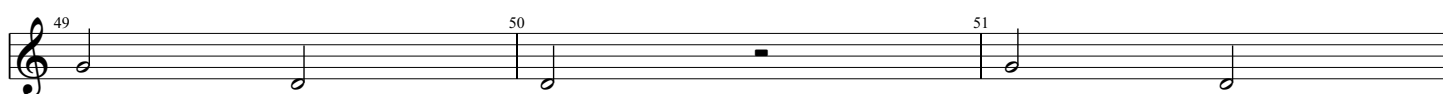
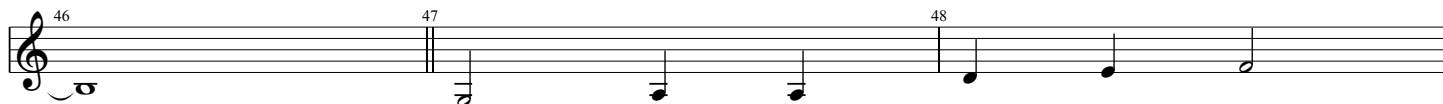
- Measures 34-36: Treble clef, 4/4 time. Notes: G4 (34), A4 (35), B4 (36).



Reading strings 5, 4, and 3



Reading strings 6, 5, and 4



Minor Pentatonic in 2nd Position



C Major Arpeggio



A Minor Arpeggio



Partial Chromatic Scale

